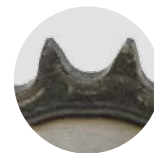
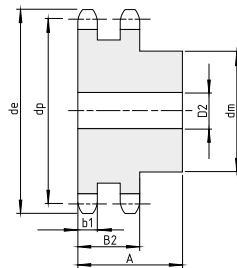
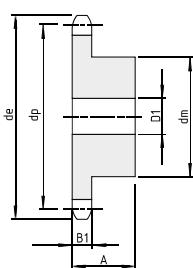
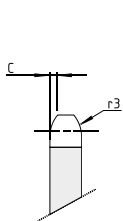


Koła łańcuchowe

Koła łańcuchowe z piastą i utwardzonymi zębami dla łańcucha rolkowego

DIN 8187 - ISO / R 606



Materiał: stal C45			5/8" x 3/8" podziałka 15,875 mm					B1	B2	b1	C	r3
							9,1	25,5	9,1	1,6	16	
Z	de	dp	1-rzędowe 10B-1					2-rzędowe 10B-2				
			kod	dm	D1	A	[kg]	kod	dm	D2	A	[kg]
8	48,40	41,48	P0447H	25	10	25	0,12	P0490H	25	12	40	0,19
9	53,30	46,42	P0448H	30	10	25	0,16	P0491H	30	12	40	0,27
10	58,30	51,37	P0449H	35	10	25	0,22	P0492H	35	12	40	0,36
11	63,20	56,34	P0450H	37	12	30	0,29	P0493H	39	14	40	0,43
12	68,20	61,34	P1224H	42	12	30	0,37	P0494H	44	14	40	0,55
13	73,20	66,32	P1225H	47	12	30	0,46	P0495H	49	14	40	0,68
14	78,20	71,34	P1226H	52	12	30	0,56	P0496H	54	14	40	0,82
15	83,20	76,36	P1227H	57	12	30	0,67	P0497H	59	14	40	0,97
16	88,30	81,37	P1228H	60	12	30	0,76	P0498H	64	16	45	1,26
17	93,30	86,39	P1229H	60	12	30	0,88	P0499H	69	16	45	1,46
18	98,30	91,42	P1230H	70	14	30	1,01	P0500H	74	16	45	1,67
19	103,30	96,45	P1231H	70	14	30	1,15	P0501H	79	16	45	1,90
20	108,40	101,49	P1232H	75	14	30	1,21	P0502H	84	16	45	2,14
21	113,40	106,52	P1233H	75	16	30	1,35	P0503H	85	16	45	2,27
22	118,40	111,55	P1234H	80	16	30	1,41	P0504H	90	16	45	2,54
23	123,50	116,58	P1235H	80	16	30	1,47	P0505H	95	16	45	2,82
24	128,50	121,62	P1236H	80	16	30	1,54	P0506H	100	16	45	3,11
25	133,60	126,66	P1237H	80	16	30	1,60	P0507H	105	16	45	3,15
26	138,60	131,70	P0465H	85	20	35	1,96	P0508H	110	20	45	3,74
27	143,60	136,75	P0466H	85	20	35	2,04	P0509H	110	20	45	3,94
28	148,70	141,78	P0467H	90	20	35	2,25	P0510H	115	20	45	4,28
30	158,80	151,87	P1238H	90	20	35	2,41	P0512H	120	20	45	4,87
32	168,90	161,95	P0471H	95	20	35	2,73	P0514H	120	20	45	5,34
34	178,90	172,05	P0473H	95	20	35	2,92	P0516H	120	20	45	5,84
35	184,00	177,10	P0474H	95	20	35	3,01	P0517H	120	20	45	6,11
36	189,00	182,15	P0475H	100	20	35	3,27	P0518H	120	20	45	6,38
38	199,10	192,24	P0477H	100	20	35	3,47	P0520H	120	20	45	6,95
40	209,20	202,34	P0479H	100	20	35	3,69	P0522H	120	20	45	7,55